

# **Polaris General Doors #06017 Installation & Operations Manual Fits Polaris General**

Revision: -



## **Before You Start:**

Please familiarize yourself with all the steps before beginning assembly.

## **Compatibility Info:**

This Door System is designed to work with other Seizmik branded Accessories for the Polaris General as well as OEM Polaris branded hard tops. Please note Seizmik cannot guarantee fitment with other branded aftermarket products. Please research installation details thoroughly on our products & others when trying to combine different branded accessories.

Seizmik makes Windshields, Mirrors, Cab Systems, Light Bars, Storage Boxes, Hood Racks, and other great accessories for UTV's to maximize the vehicles usefulness.

If you have any questions, comments, need assistance, or are missing parts, please call 1-866-838-3366 between 9:00AM and 5:00PM EST or email us at [support@seizmik.com](mailto:support@seizmik.com). Visit [www.seizmik.com](http://www.seizmik.com) for more information on our products.

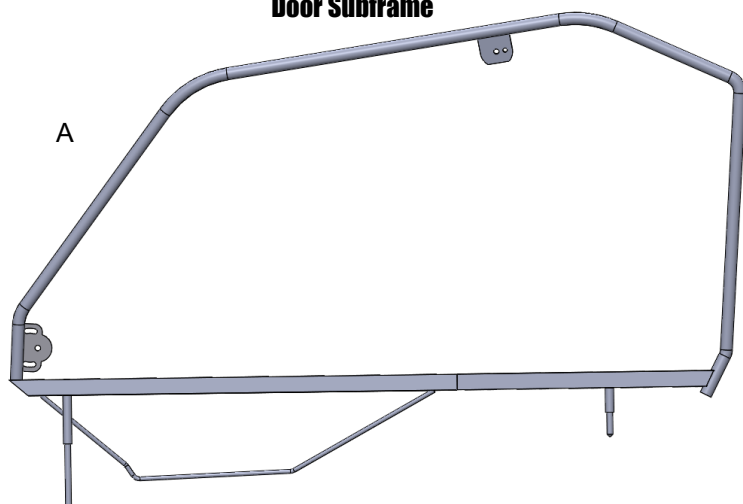


**WARNING:** This product is designed to protect from the elements of weather and is not designed for passenger retention purposes. Vehicle passengers should not lean on or against the doors. All passengers should wear seat belts while the vehicles is in use. Passengers leaning on or against the doors or failure of passengers to wear seat belts could result in serious bodily injury or death, especially when the vehicle is in operation.

# Polaris General Doors Parts List

Parts shown are driver's side parts. You will have a mirrored part for passenger side.

**Door Subframe**

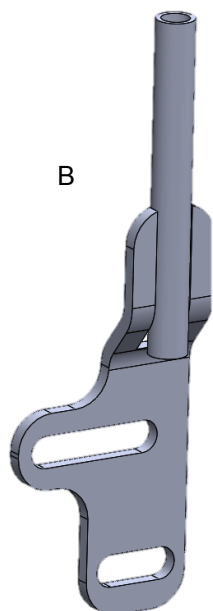


## Parts:

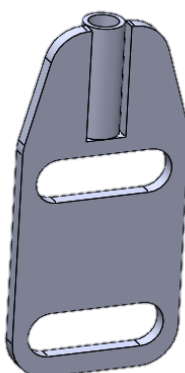
- A. Door Subframe (Driver/Passenger)
- B. Front Mounting Bracket (Driver/Passenger)
- C. Rear Mounting Bracket (x2)
- D. Front mounting bracket shim (x2)
- E. Front Filler Panel spacer (x2)
- F. EZ Clip M10 Nut (x4)
- G. Front Filler Panel Outer (Driver/Passenger)
- H. Front Filler Panel Inner (Driver/Passenger)
- I. Gasket 72" (x2)
- J. Close Lever Base Plate (x2)
- K. Close Lever (x2)
- L. 6 Feet of adhesive backed Velcro (Hook)

## Hardware:

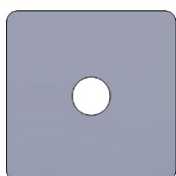
- M10 x 25mm socket button head bolt (x4)
- M8 x 25mm socket button head bolt (x4)
- Torx Head thread forming screws (x6)
- M8 Locknut (x2)
- 10mm Washers (x4)
- 8mm Washers (x4)



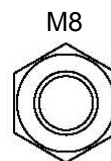
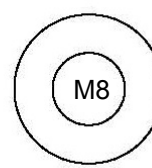
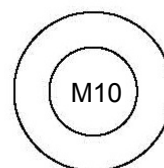
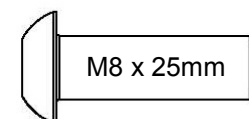
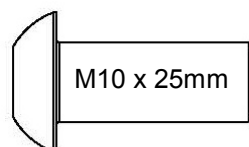
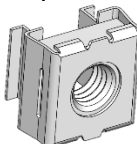
C



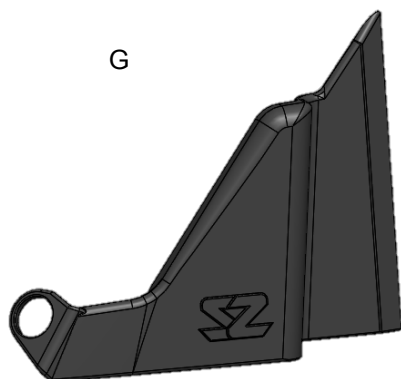
D



F



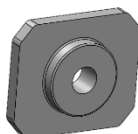
G



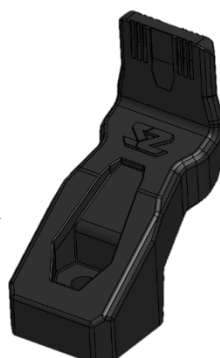
H



J



K



I

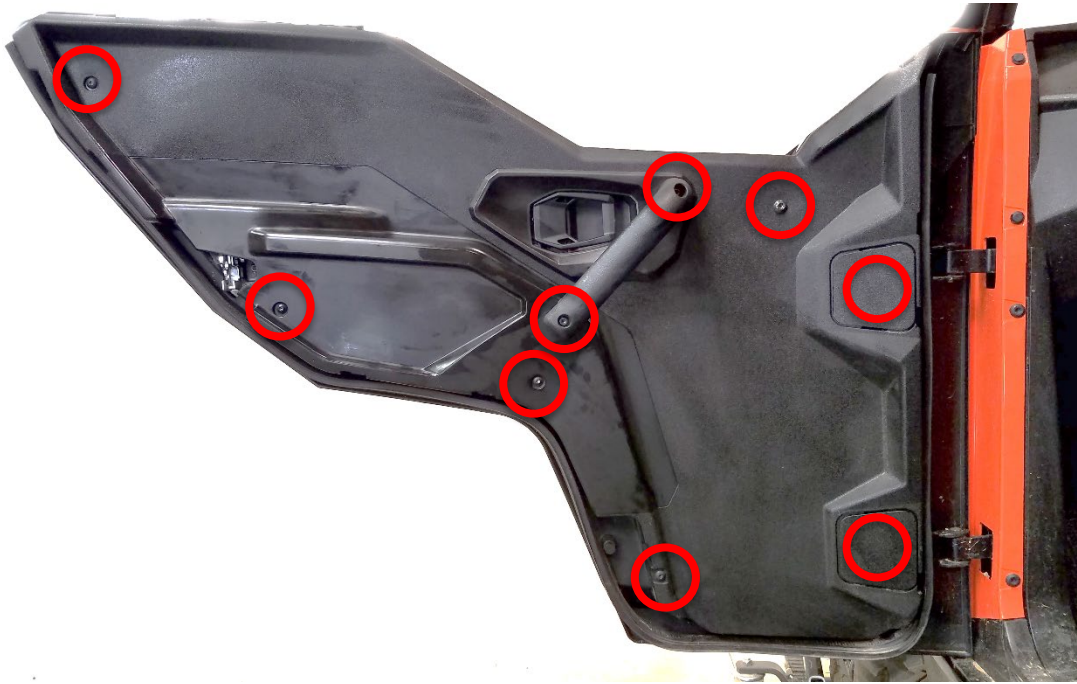


For item part numbers refer to the appendix at the back of these instructions.



# 1. Removal of Factory Inner Door Panels

Driver's side shown. Repeat for Passenger side.



1. Remove the Torx and Allen head fasteners from the locations shown above



2. Use a flat blade screwdriver to remove the hinge adjustment covers to reveal the last two Torx fasteners (top and bottom). Remove the inner door Panel



## 2. Installation of Upper Doors

**Drivers's side shown. Repeat for Passenger side.**



**3.** Remove the upper door hinge mounting bolt closest to the vehicle as shown above (you will re-use this bolt later).



**4.** The front spacer (D) ensures the Front mounting bracket (B) is installed with the correct offset so that the pins on the upper door frame line up with the bracket.



**5.** Insert the front spacer block between the Front Mounting Bracket (B) and the aluminum Polaris door frame.



**6.** Re-install the bolt removed in step 4. Then install an M8-25 and locknut with washer in the top hole of the bracket. Install only finger tight at this time.



## 2. Installation of Upper Doors



7. Insert EZ clip M10 nuts (F) into Rear Mounting bracket (C) as shown. Slide the Rear Mounting Bracket (C) between the aluminum door frame structure and the outer door panel. Use 2 m10x25mm button head bolts and washers thread into the EZ clip nuts (F). The slots in the frame and where the EZ nuts ride will allow for proper alignment of the door pins. Install only finger tight at this time.

### 3. Installing The Front Filler Panel



8. Remove the upper factory roll cage bolt.



**TIP:** Be sure to keep a finger or have a friend hold the nuts in place or they will fall and possibly be hard to locate. A magnet can be your friend here.



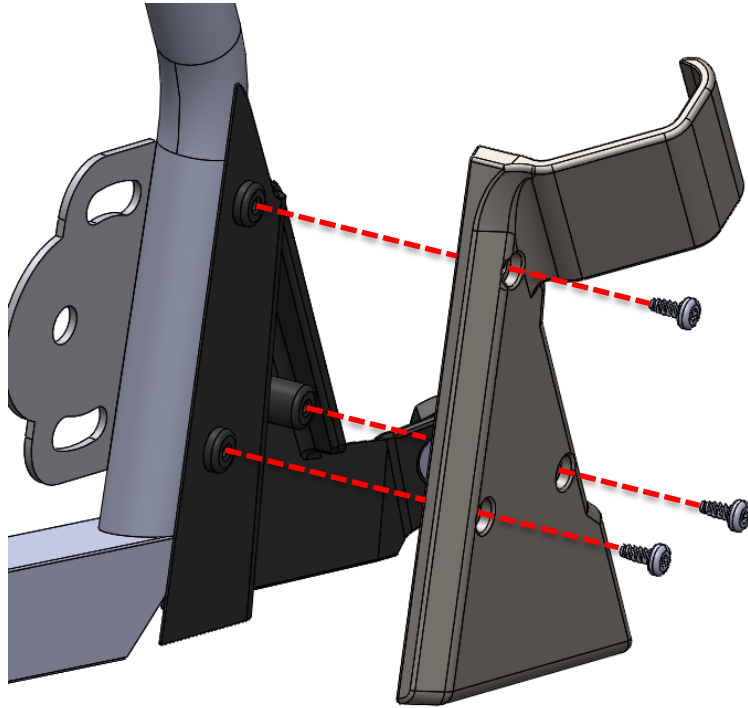
9. Install the front filler panel with the front filler panel shims inside the hole as shown above. These act as a crush sleeve for the plastic panel



10. Re-Torque the Factory Cage bolts to Polaris Spec's.



### 3. Installing The Front Filler Panel



**11.** Install the front filler panel inner (H) to the front filler panel outer (F) using supplied torx head screws (3 per side) as shown in the pictures above. Install until snug. **CAUTION OVER TIGHTENING THESE SCREWS WILL CAUSE DAMAGE TO THE FRONT FILLER PANEL OUTER (F) SCREW BOSSES.**

## 4. Door Mock Up



**12.** With all mounting brackets loosely fitted into place, place the upper door frame into the 2 pins and adjust the door frontwards and backwards to line up the door to the vehicle. Take your time here. It is important to line up the door as best you can while the door panels are taken apart. To adjust the upper door, slowly close the door and make sure there is no contact and make sure the gap is the same around the entire perimeter. Once you are happy with how the door fits in the opening. Snug down all bracket mounting bolts and slide your door in and out of the pins multiple times to ensure easy install and removal. (The outer door panel will need to be pulled out of the way for initial fit-up. Trimming will occur after this step) Once you are happy with how the door fits in the opening, and how the door slides in and out of the pins, tighten down all bracket mounting bolts.



**NOTE** The factory Striker pin can be adjusted if the door is not closing easily because of the added weight and force of the door closing against the gasket



## 5. Door Skin Trimming



**13.** Use a 3/4" drill bit (or step bit) and drill a hole in the rear of the outer door panel so that the door pins may pass through the panel an into the Rear mounting bracket (D).



**14.** The Front Mounting Bracket (B) requires the outer panel to be trimmed. Again use a 3/4" drill bit and drill a hole in the outer door panel so that the front door pin may pass through the panel and into the Front Mounting Bracket (B).



## 6. Gasket and Velcro Installation



**20.** Clean the highlighted area of the roll cage and filler panel with rubbing alcohol or window cleaner. Adhere the provided gasket into the outer channel of the roll cage as shown by the highlighted area above. Be sure the gasket is oriented the same as the image above.



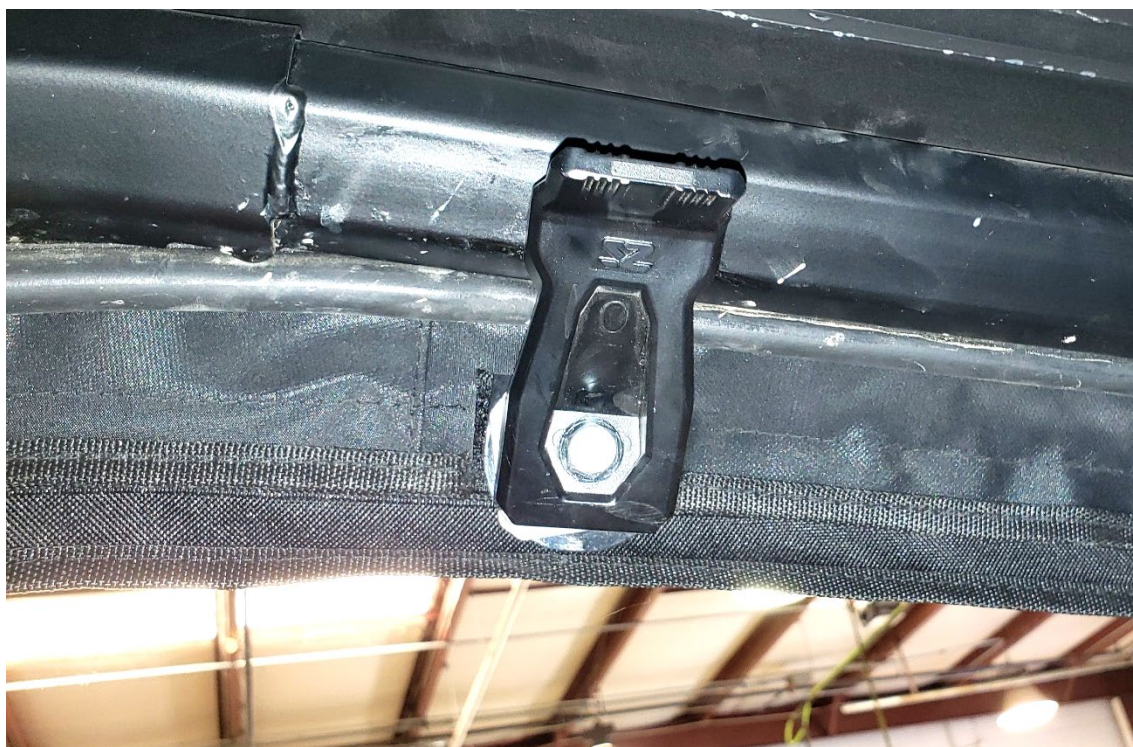
**21.** Lay the Textile Flap over the outer door plastics and mark the location of the outside perimeter. Clean the designated area with rubbing alcohol or window cleaner.



**22.** Cut the Velcro to the correct lengths and adhere to the area marked before and stick the flap down.



## 7. Upper Door Handle Overview



**15.** Your pinned General Upper Door is equipped with an auxiliary close lever (K) located at the top of the door frame. This close lever (K) aids gasket compression and overall door sealing. Simply climb inside the vehicle, close the door, and rotate this lever 180° upward to engage on the ROPS as shown. This will help seal the door and should also be engaged when trailering the vehicle to prevent unwanted door failure due to high wind speeds.



## 8. Installing Mirrors with Soft Doors (Opt.)

**Driver's side shown. Repeat for Passenger's side.**



**16.** Locate the mirror mounting bracket on the inside of the door frame. Mark the location of the hole with a punch so that it can be seen on the outside of the door textile.



**17.** Using a sharp razor or utility knife, cut the textile so the mirror mounting bolt can pass through.

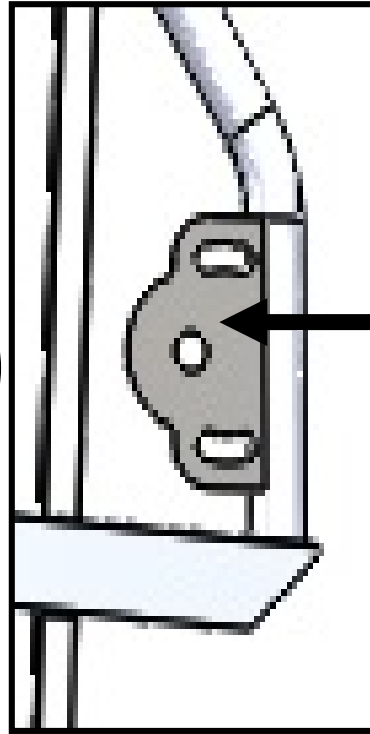
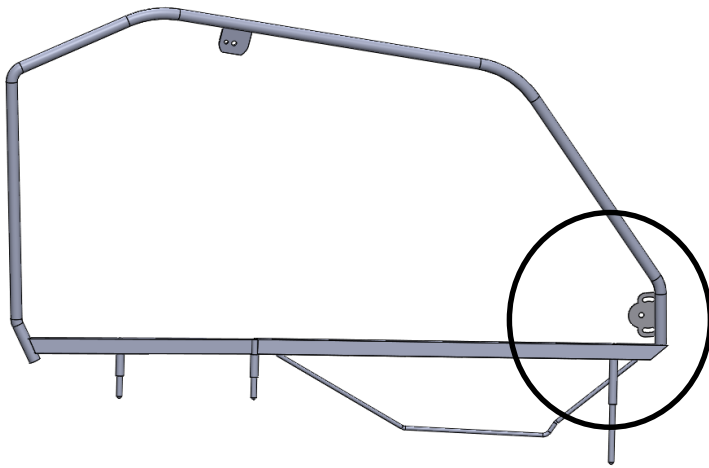


**18.** Pass the bolt through the mounting bracket and thread into the mirror and tighten (DO NOT OVER TIGHTEN).





**Attention: Additional Velcro needed if you will not be bolting a mirror to the door**



When cutting the self adhesive Velcro to place on the doors, place a 3" piece on the mirror bracket here.



## APPENDIX

Polaris General upper door kit (06017)		
Item #	Part#	Description
A	54-SW-90724	Door sub frame <b>driver side</b>
A	54-SW-90725	Door sub frame <b>passenger side</b>
	54-SW-19204	06017 Hardware Kit
	54-SW-90960	Hardware kit without mounting brackets
C	54-SW-90726	Rear mounting bracket (2) with hardware
B	54-SW-90727	Front mounting bracket (pair only)
E	54-SW-90728	Front filler panel spacer
	54-SW-90951	Front Panel Spacer
F	54-SW-90729	EZ clip M10 nut
G	54-SW-90730	FRONT FILLER PANEL, DRIVERS SIDE, 06017
G	54-SW-90731	FRONT FILLER PANEL, PASSENGER SIDE, 06017
I	54-SW-90732	Self adhesive door bulb gasket 72"
K	54-SW-90733	Close lever
L	54-SW-90734	72" self adhesive velcro
	54-SW-90735	M10 x 25 button head bolt
	54-SW-90736	M8 x 25 button head bolt
	54-SW-90737	TorxHead thread forming screws
	54-SW-90738	M8 locknut
	54-SW-90115	Washer M10
	43-SW-90739	M8 washer
	54-SW-90740	textile <b>Driver side</b>
	54-SW-90741	textile <b>Passenger side</b>

